

Student's Name _____

Teacher's # _____ Branch _____

Score: _____ (Check one): *passed* _____ *needs more study* _____

Total Perfect Score = 82 Passing Score = 58 (70%) Convention Eligibility = 66 (80%)

Keyboard
1

CERTIFICATE OF MERIT™

MASTER COPY
master copy
MASTER COPY
(please do not write on if this label is in color)



Musical Knowledge Examination

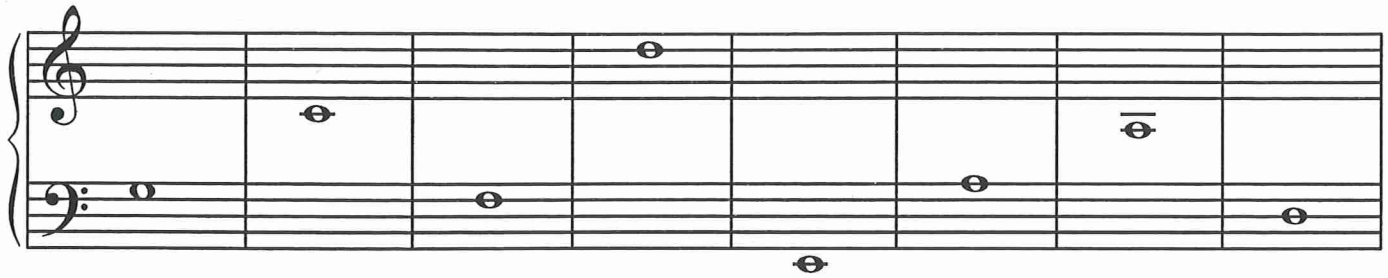
KEYBOARD: LEVEL 1

2008 Edition

Ear Training – Set C

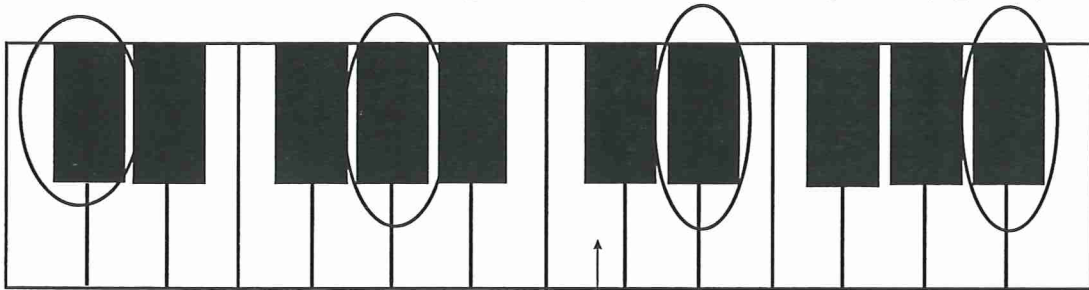
Copyright © 2008 Music Teachers' Association of California

1. Write the letter name for each note. (7 points)

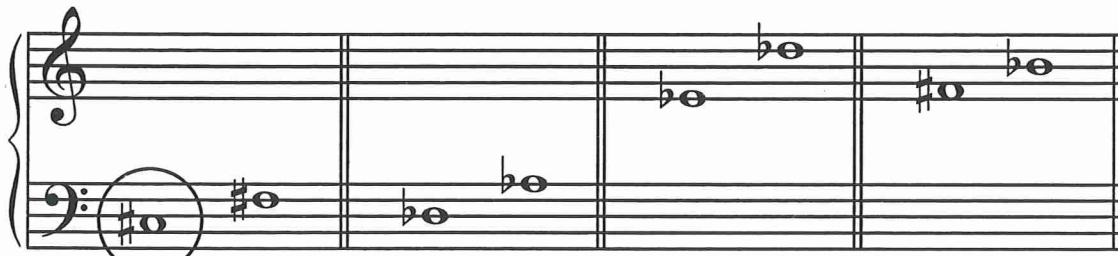


G
(example)

2. Circle the note that matches each circled piano key. The first one is given. (3 points)



Middle C



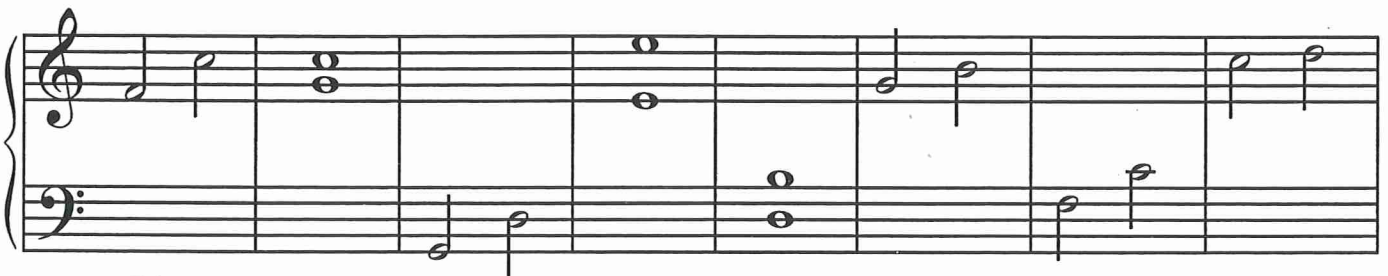
(example)

MASTER COPY
master copy

MASTER COPY

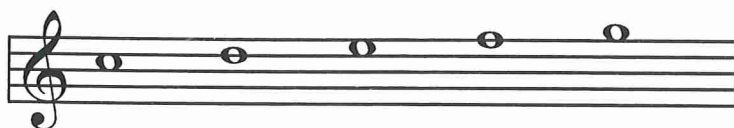
(please do not write on if this label is in color)

3. Name each interval: 2nd, 3rd, 4th, 5th, 6th, 7th, or 8th (octave). (7 points)



5th
(example)

4. Name each five finger pattern. Tell if each is Major or minor. (10 points)



C Major
(example)





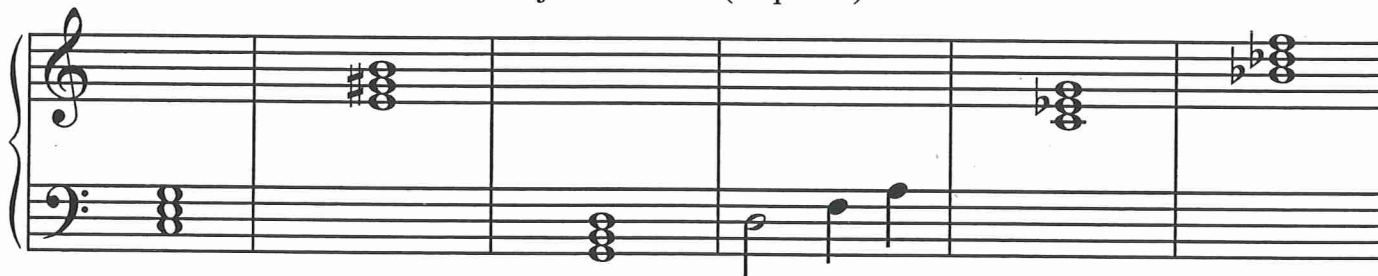






MASTER COPY
 master copy
 Please do not write on this label (it is color)

5. Name each triad. Tell if each is Major or minor. (10 points)



C Major
(example)

6. Name the Major key for each of these key signatures. The first one is given. (3 points)

A musical staff with four measures. The first measure has a treble clef, a key signature of one flat (F major), and a bass clef. The second measure has two sharps (D major). The third measure has one sharp (G major). The fourth measure has two sharps (D major).

 F Major
(example)

 Major

 Major

 Major

7. Add the correct sharps (#) or flats (b) to complete these Major scales. (3 points)

G Major Scale

A musical staff in bass clef with notes G, A, B, C, D, E, F, G.

F Major Scale

A musical staff in bass clef with notes F, G, A, B, C, D, E, F.

D Major Scale

A musical staff in treble clef with notes D, E, F, G, A, B, C, D.

8. Check the correct Roman Numeral for each primary triad in this example. (3 points)

A musical staff with four primary triads: C major (C-E-G), F major (F-A-C), D major (D-F-A), and G major (G-B-D).

 I
 V

 IV
 V

 I
 V

9. Are the primary triads in question 8 Major or minor? Check the answer. (1 point)

 Major minor

Answer these questions about this music from a Sonatina by Biehl. (11 points)

14. According to the key signature, what is the Major key?
 _____ G Major
 _____ C Major
15. How will the music sound in measure 1?
 _____ loud
 _____ soft
16. How will the first three notes in measure 2 sound?
 _____ legato
 _____ staccato
17. How will the music sound at the end of measure 4?
 _____ medium loud
 _____ loud
18. What is the name for the five finger pattern that is circled in measures 1-2?
 _____ C Major
 _____ d minor
19. What type of rest is used in measure 2?
 _____ half rest
 _____ quarter rest
20. What is the name for the circled note in measure 4.
 _____ C
 _____ A
21. What is the Roman Numeral for the left hand chord in measure 1?
 _____ I
 _____ V
22. Name each boxed interval (2nd, 3rd, etc.).
 a. _____
 b. _____
 c. _____

MASTER COPY

master copy

MASTER COPY

(please do not write on if this label is in color)

EAR TRAINING EVALUATION

This is your Level 1 ear training evaluation. Listen to each question and its musical example. Circle your answer. Each example will be played two times. (7 points)

1. Major



minor



2. Legato touch

Staccato touch

3. Major



minor



4. Third



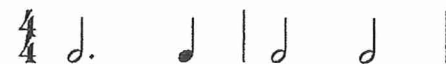
Seventh



5. A.



B.



6. A.



B.



7. Loud to soft

Soft to loud