

1. Name each interval: 2nd, 3rd, 4th, 5th, 6th, 7th, or 8th (octave). (6 points)

4th
Example

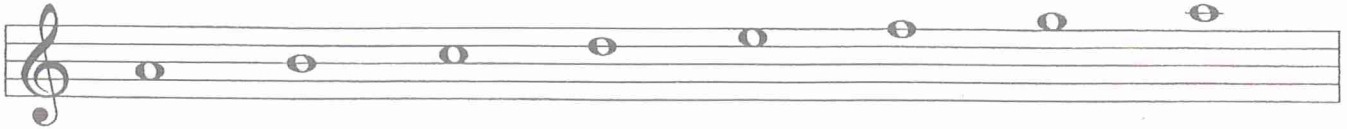
2. Name each Major key signature. (5 points)

G Major
Example

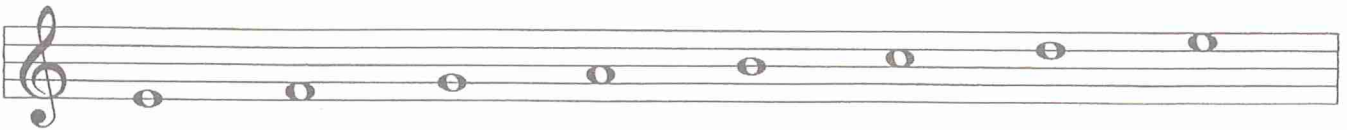
MASTER COPY
please do not write on

3. Add the sharps (#) or flats (b) needed to form each of the following scales. (8 points)

A minor, harmonic form



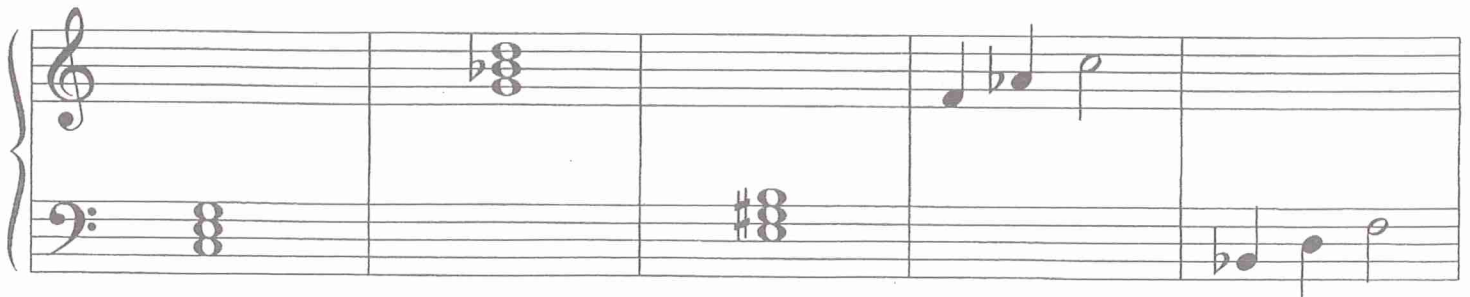
E Major



Bb Major



4. Name each triad. Tell if it is Major or minor. (8 points)



C Major
Example

5. a. Draw the primary triads for the key of D Major. (3 points)

A musical staff in treble clef with a key signature of two sharps (F# and C#). The staff is divided into three measures. Below the first measure is the Roman numeral 'I', below the second is 'IV', and below the third is 'V'. The notes for each triad are not yet drawn.

b. Are the primary triads Major or minor? _____ (1 point)

6. Match the names for the primary triads with their Roman numerals. (3 points)

- a. Tonic _____ IV
- b. Subdominant _____ V
- c. Dominant _____ I

7. Match these cadences with their names. (3 points)

a. _____ Half

The staff shows a key signature of two sharps. The first measure contains a triad labeled 'IV' (F#4, C#5, G5) and the second measure contains a triad labeled 'I' (D4, F#4, A4).

b. _____ Plagal

The staff shows a key signature of two sharps. The first measure contains a triad labeled 'V' (A4, C#5, E5) and the second measure contains a triad labeled 'I' (D4, F#4, A4).

c. _____ Authentic

The staff shows a key signature of two sharps. The first measure contains a triad labeled 'I' (D4, F#4, A4) and the second measure contains a triad labeled 'V' (A4, C#5, E5).

8. Write in the counts for this rhythm. (4 points)



9. Match each time signature with a rhythm. (3 points)



10. Add one bar line to this rhythm. (1 point)



11. Match each term with its meaning. (7 points)

- | | |
|------------------|--|
| a. Sforzando | ___ Quick, lively |
| b. Andante | ___ Play from the beginning to the <i>fine</i> (end) |
| c. Allegro | ___ Moderate tempo |
| d. Vivace | ___ Gradually louder |
| e. Moderato | ___ Fast |
| f. D. C. al fine | ___ A sudden, strong accent |
| g. Crescendo | ___ Walking tempo |

12. Arrange these dynamic signs in order from softest to loudest. The first one is given. (1 point)

f *mp* *fff* *p* *mf* *ff* *ppp* *pp*

ppp _____

13. Match each sign with its meaning. (4 points)

- | | |
|--|----------------------------------|
| a.  | ___ Diminuendo: gradually softer |
| b.  | ___ Fermata: hold longer |
| c.  | ___ Damper pedal |
| d.  | ___ Play eight notes higher |

14. The music above is from *Sonatina in C*, by Biehl. Answer these questions about the music. Put a check (✓) on the line in front of your answer. (6 points)

- a. On what beat does the music begin? ___ 1
___ 4
- b. In what clef does the left hand play? ___ Treble
___ Bass
- c. Look at the right hand notes in measures 1-4. Is this an example of **sequence** or **repetition**? ___ repetition
___ sequence
- d. Name the circled triad in measure 5. ___ C Major
___ F Major
- e. Name the circled interval in measure 6. ___ 7th
___ 6th
- f. Name the circled note in measure 8. ___ G
___ B