

1. Name each interval: 2nd, 3rd, 4th, 5th, 6th, 7th, or 8th (octave). (7 points)

A musical staff with two staves (treble and bass clefs) containing seven pairs of notes. The intervals are: 1. Treble clef, G4 and B4 (3rd); 2. Treble clef, C5 and E5 (3rd); 3. Treble clef, D4 and F4 (3rd); 4. Bass clef, G3 and B3 (3rd); 5. Bass clef, C4 and E4 (3rd); 6. Bass clef, F3 and A3 (3rd); 7. Bass clef, G3 and G4 (8th).

3rd  
Example

2. Name each Major key signature. (5 points)

A musical staff with two staves (treble and bass clefs) showing the key signature for C Major (no sharps or flats).

C Major  
Example

A musical staff with two staves (treble and bass clefs) showing the key signature for D Major (two sharps: F# and C#).

\_\_\_\_\_

A musical staff with two staves (treble and bass clefs) showing the key signature for E Major (three sharps: F#, C#, and G#).

\_\_\_\_\_

A musical staff with two staves (treble and bass clefs) showing the key signature for Bb Major (two flats: Bb and Eb).

\_\_\_\_\_

A musical staff with two staves (treble and bass clefs) showing the key signature for Ab Major (three flats: Bb, Eb, and Ab).

\_\_\_\_\_

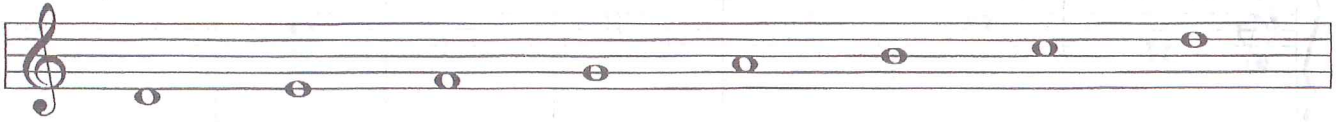
A musical staff with two staves (treble and bass clefs) showing the key signature for F# Major (three sharps: F#, C#, and G#).

\_\_\_\_\_

**MASTER COPY**  
please do not write on

3. Add the sharps (#) or flats (b) needed to form the following scales. (5 points)

D Major



A minor, harmonic form



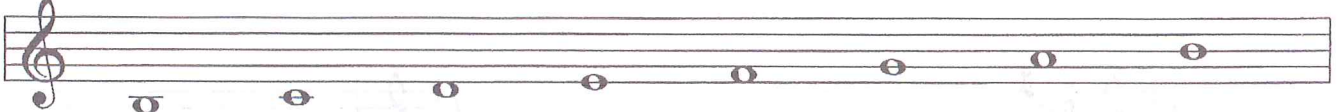
E Major



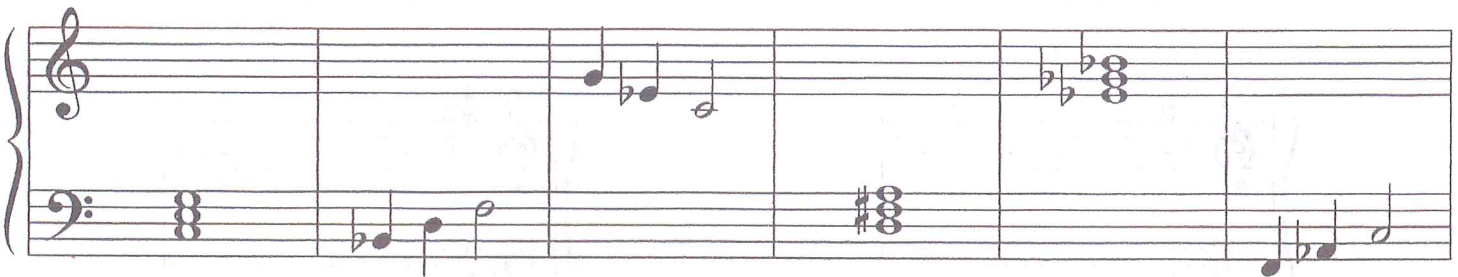
A Major



Bb Major



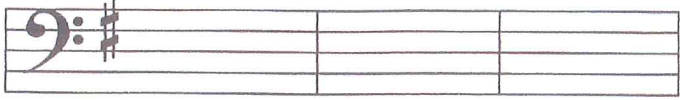

4. Name each triad. Tell if it is Major or minor. (10 points)



C Major

(example)

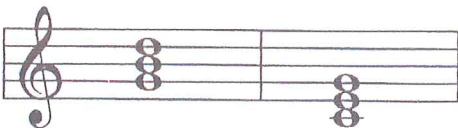
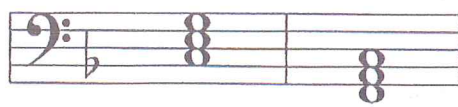
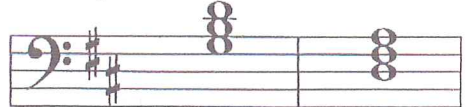
5. Draw the primary triads for the following keys. (6 points)

<p>G Major</p> 	<p>D Major</p> 
<p>I                  IV                  V</p>	<p>I                  IV                  V</p>

6. Match the names for the primary triads with their Roman numerals. (3 points)

- |                |          |
|----------------|----------|
| a. Tonic       | _____ IV |
| b. Subdominant | _____ V  |
| c. Dominant    | _____ I  |

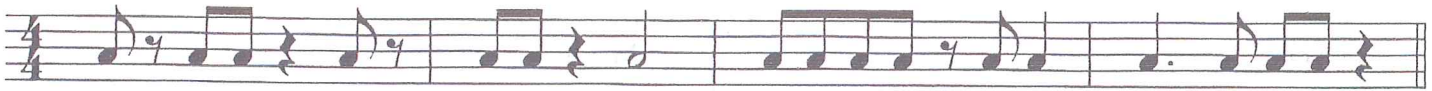
7. Label with Roman numerals the triads in the following examples. (4 points)

<p>C Major</p> 	<p>F Major</p> 	<p>D Major</p> 
<p><u>  V  </u> (example)      <u>  I  </u></p>	<p>_____      _____</p>	<p>_____      _____</p>

8. Match the cadence name with the Roman numerals. (3 points)

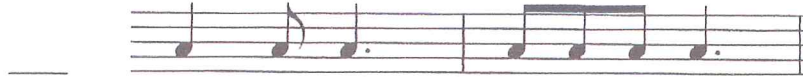
- |    |    |   |                         |
|----|----|---|-------------------------|
| a. | V  | I | _____ Half cadence      |
| b. | IV | I | _____ Authentic cadence |
| c. | I  | V | _____ Plagal cadence    |

9. Write in the counts for this rhythm. (4 points)



10. Match each time signature with a rhythm. (4 points)

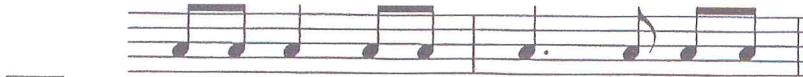
a.  $\frac{2}{4}$



b.  $\frac{3}{4}$



c.  $\frac{4}{4}$



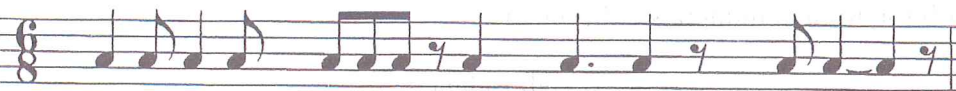
d.  $\frac{6}{8}$



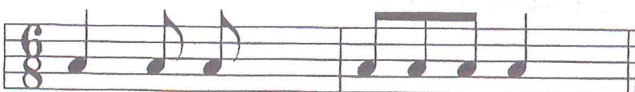
11. Add three bar lines to this rhythm. (3 points)



12. Add three bar lines to this rhythm. (3 points)



13. Add one rest to each measure to complete this rhythm segment. (2 point)



14. Write the meaning of each word or sign. (7 points)

a. *sforzando* (*sfz*) \_\_\_\_\_

b. *ritardando* (*rit.*) \_\_\_\_\_

c. *andante* \_\_\_\_\_

d. *mezzo piano* (*mp*) \_\_\_\_\_

e. *allegro* \_\_\_\_\_

f. *fermata* (♯) \_\_\_\_\_

g. *accent* (♩) \_\_\_\_\_

15. Match these items with the correct meaning or sign. (12 points)

A. *8<sup>va</sup>* - - - - \_\_\_\_\_ play detached, not connected

B. *pp* \_\_\_\_\_ loud

C. *staccato* ♯ \_\_\_\_\_ play one octave higher

D. *a tempo* \_\_\_\_\_ moderate tempo

E. *fff* \_\_\_\_\_ quickly, lively

F. *slur* \_\_\_\_\_ gradually softer

G. *crescendo* <\_\_\_\_\_> \_\_\_\_\_ return to original tempo

H. *moderato* \_\_\_\_\_ very, very loud

I. *tenuto* ♯ \_\_\_\_\_ play legato, smoothly

J. *f* \_\_\_\_\_ very soft

K. *vivace* \_\_\_\_\_ hold for full value, stress

L. *cadence* \_\_\_\_\_ gradually louder

M. *diminuendo* >\_\_\_\_\_< \_\_\_\_\_

16. Answer these questions about the music above. Put a check (✓) on the line in front of your answer. (4 points)

- a. On what beat does the music begin?      \_\_\_ beat 1      \_\_\_ beat 2  
    \_\_\_ beat 3      \_\_\_ beat 4
- b. In what Major key is this music written?      \_\_\_ A Major  
    \_\_\_ D Major  
    \_\_\_ G Major
- c. Which word best describes the music under bracket A?      \_\_\_ sequence  
    \_\_\_ repetition
- d. Which word best describes the music under bracket B?      \_\_\_ sequence  
    \_\_\_ repetition

17. Name the boxed chords in these measures. Tell if each is Major or minor. (example: C Major) (3 points)

measure 3      \_\_\_      \_\_\_\_\_

measure 5      \_\_\_      \_\_\_\_\_

measure 6      \_\_\_      \_\_\_\_\_

18. Name the circled interval (2nd, 5th, octave, etc.) in the following measures. (6 points)

measure 1      \_\_\_\_\_

measure 2      \_\_\_\_\_

measure 4      \_\_\_\_\_

measure 7      \_\_\_\_\_

measure 9      \_\_\_\_\_

measure 10      \_\_\_\_\_