

432 ✓

Branch _____

Score: 52 (Check one): passed needs more study _____

Total Perfect Score = 100 Passing Score = 70 (70%) Convention Eligibility = 80 (80%)

Keyboard
4

18
/ 92 ✓

MASTER COPY

master copy

MASTER COPY

(please do not write on if this label is in color)

CERTIFICATE OF MERIT



Musical Knowledge Examination

Keyboard: Level 4

2007 Edition

Ear Training – Set A

1. Name each Major key. (6 points)



_____ Major _____ Major _____ Major _____ Major _____ Major _____ Major

2. Name each minor key. (6 points)



_____ minor _____ minor _____ minor _____ minor _____ minor _____ minor

3. Check the correct term to describe each combination of keys. (2 points)

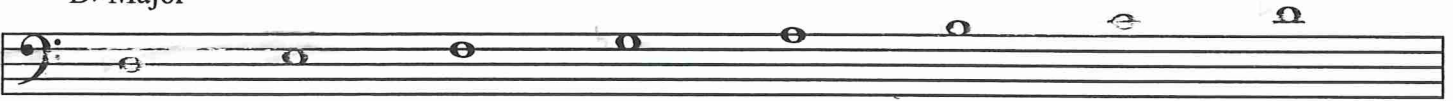
a. D Major and d minor _____ Parallel _____ Relative

b. D Major and b minor _____ Parallel _____ Relative

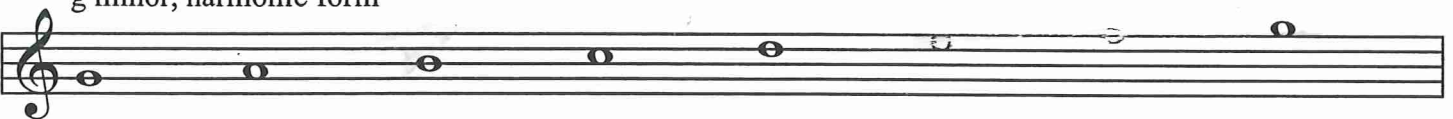
MASTER COPY
master copy
MASTER COPY
(please do not write on if this label is in color)

4. Add the sharps (#) or flats (b) to complete the following scales. (5 points)

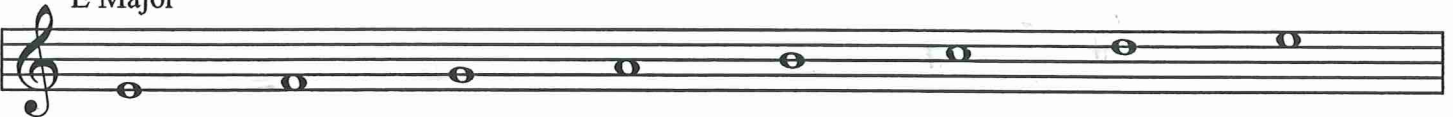
D \flat Major



g minor, harmonic form



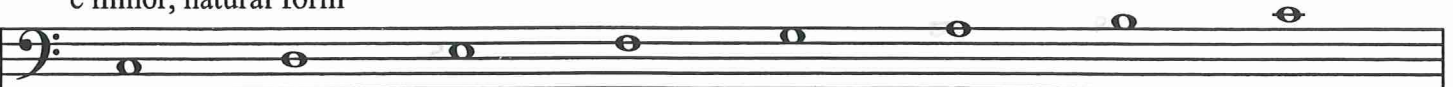
E Major



F Major



c minor, natural form



5. Name these intervals (for example: P4, M3, m6, etc). (6 points)

A musical staff in bass clef with a key signature of one sharp (F#). The intervals shown are: 1. C2 to D2 (P1), 2. C2 to E2 (M2), 3. C2 to G2 (M3), 4. C2 to A2 (M3), 5. C2 to F#2 (M6), 6. C2 to D#2 (M7).

6. Name the root of each triad. Tell whether each is Major, minor, or diminished. Tell if it is in Root position (R or 5/3), first inversion (1st, 6/3, or 6), or second inversion (2nd or 6/4). The first one is given. (5 points)

A musical staff in treble clef with three triads. The first triad is C Major in 2nd inversion (6/4), labeled as such. The second triad is E minor in root position. The third triad is F Major in 2nd inversion (6/4).

7. Write these triads. (4 points)

A musical staff in treble clef with four empty boxes for writing triads. Below the boxes are the following descriptions: 1. e minor first inversion, 2. d diminished root position, 3. c minor root position, 4. F Major second inversion.

8. Label these triads in the key of G Major with Roman Numerals. Please put lines above and below the Roman Numerals for Major chords (for example, V). The first one is given. (4 points)

A musical staff in treble clef with a key signature of one sharp (F#). The first triad is G Major in root position, labeled with the Roman numeral I. The other four triads are: 1. A Major in root position, 2. B Major in root position, 3. C Major in 2nd inversion (6/4), 4. D Major in 2nd inversion (6/4).

9. Circle the three Roman Numerals that represent the Primary triads. (3 points)

I ii iii IV V vi vii^o

MASTER COPY

master copy

MASTER COPY

10. Write these triads for the following keys. (6 points)

C Major

iii vi V

a minor, harmonic form

i iv V

11. Match these cadences with their names. (3 points)

C Major

a.

_____ Half (I - V)

G Major

b.

_____ Authentic (V - I)

F Major

c.

_____ Plagal (IV - I)

MASTER COPY
master copy
MASTER COPY
(please do not write on if this label is in color)

12. Name the Major key to which each of these Dominant 7ths belongs. The first one is given. (3 points)

 C Major _____ Major _____ Major _____ Major

13. Write counts under the notes for this rhythm. (4 points)

14. Add barlines to complete this rhythm. (3 points)

15. Place these tempo marks in order from slowest to fastest. The first tempo is given. (5 points)

1

allegro *presto* *andantino* *allegretto* *adagio* *andante*

adagio _____

MASTER COPY

master copy

MASTER COPY

(please do not write on if this label is in color)

16. Check the term that describes each musical example.. (3 points)

a.

_____ Transposition

_____ Arpeggio

_____ Imitation

b.

_____ Sequence

_____ Imitation

_____ Repetition

c.

_____ Repetition

_____ Sequence

_____ Imitation

17. Put these periods of music history in the correct order. (1 point)

Romantic

Contemporary

Classical

Baroque

1. _____ 2. _____ 3. _____ 4. _____

4

Answer these questions about this music from *The Sky is Bright* by Gurlitt. (9 points)

18. This music is in the key of C Major. Give the Roman Numeral for each circled chord. **Be sure to check the clef signs!**

- a. _____
- b. _____
- c. _____
- d. _____
- e. _____

19. What does the symbol *p* in measure 1 mean? Give the English meaning.

20. What does the term *cresc.* in measure 5 mean? Give the English meaning.

21. What does the term *decresc.* in measure 12 mean? Give the English meaning.

22. What term describes the melody in the bracketed sections of measures 1-8?

- _____ Repetition
- _____ Imitation
- _____ Sequence

MASTER COPY

master copy

Answer these questions about this music from *Grandmother's Minuet* by Grieg. (10 points)

23. According to the key signature, what is the Major key?

_____ Major

24. What does the symbol *pp* in measure 1 mean? Give the English meaning.

25. Name the circled chords with their roots, qualities, and positions. The first one is given.

a. D Major R (or 3)⁵

b. _____

c. _____

d. _____

e. _____

26. Name the boxed intervals (for example, P4).

1. _____

2. _____

3. _____

4. _____

MASTER COPY

master copy

MASTER COPY

(please do not write on if this label is in color)

EAR TRAINING EVALUATION

This is your Level 4 ear training evaluation. Listen to each question and its musical example. Mark (or circle) your answer. Each example will be played two times. (12 points)

1. Recognition of Major or minor in a four-measure phrase.

Ex. 1 Major minor

Ex. 2 Major minor

2. Recognition of tempo.

Presto Andantino

3. Recognition of Major or minor triads.

Ex. 1 Major minor

Ex. 2 Major minor

Ex. 3 Major minor

4. Recognition of Major and Perfect intervals.

Ex. 1 Perfect 5th Major 6th

Ex. 2 Major 3rd Major 2nd

Ex. 3 Perfect 4th Major 7th

5. Recognition of meter in a four-measure phrase.

Ex. 1 $\frac{2}{4}$ time $\frac{3}{4}$ time

Ex. 2 $\frac{2}{4}$ time $\frac{3}{4}$ time

6. Recognition of compositional techniques.

Sequence Repetition

12