

1. Name the Major and minor keys for these key signatures. (8 points)

___ Major ___ Major ___ Major ___ Major
 ___ minor ___ minor ___ minor ___ minor

2. Write these key signatures in both clefs. (4 points)

3. Add the sharps or flats needed to form each scale. (3 points)

MASTER COPY
please do not write on

F minor, natural form

G minor, harmonic form

E Major

4. Add the sharps or flats needed to form this chromatic scale. (1 point)

5. Name each interval (for example: P5, M2, m6). (7 points)

A musical staff in treble clef with a key signature of one flat (Bb). The staff contains seven intervals, each marked with a horizontal line below it for labeling. The intervals are: 1. Bb2 (minor second), 2. Bb3 (minor third), 3. Bb4 (minor fourth), 4. Bb5 (minor fifth), 5. Bb6 (minor sixth), 6. Bb7 (minor seventh), and 7. Bb8 (minor octave).

6. Name the root of each triad. Tell whether each is Major, minor or diminished. Tell if it is in root position (R), 1st inversion (1st), or 2nd inversion (2nd). The first one is done for you. (8 points)

A musical staff in treble clef with a key signature of one flat (Bb). It contains three triads. The first triad is labeled "C Major 2nd" and consists of notes C4, E4, and G4. The second triad consists of notes Bb3, D4, and F4. The third triad consists of notes Bb3, D4, and F4 with a sharp sign over the D4 note.

A musical staff in bass clef with a key signature of one flat (Bb). It contains three triads. The first triad consists of notes Bb3, D4, and F4. The second triad consists of notes Bb3, D4, and F4. The third triad consists of notes Bb3, D4, and F4 with a sharp sign over the D4 note.

A musical staff in bass clef with a key signature of one flat (Bb). It contains three triads. The first triad consists of notes Bb3, D4, and F4. The second triad consists of notes Bb3, D4, and F4 with a sharp sign over the D4 note. The third triad consists of notes Bb3, D4, and F4.

7. Write the Dominant 7th (V7) chord in root position for each key. The first one is done for you. (3 points)

Key of F Major Key of Eb Major Key of A Major Key of D minor

A musical staff in bass clef with a key signature of one flat (Bb). It contains four dominant 7th chords in root position. The first chord is F7 (Bb, C, Eb, F). The second chord is Eb7 (Bb, C, Eb, F). The third chord is A7 (B, C, E, G). The fourth chord is D7 (E, F, Ab, B).

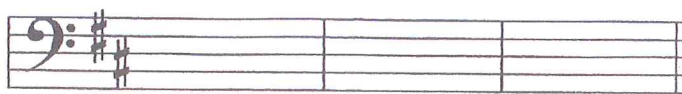
8. These Dominant 7th chords are in 1st inversion. Name the root of each chord. (5 points)

A musical staff in bass clef with a key signature of one flat (Bb). It contains five dominant 7th chords in 1st inversion. The first chord has a sharp sign over the first note (F#). The second chord has a sharp sign over the first note (F#). The third chord has a flat sign over the first note (Bb). The fourth chord has a flat sign over the first note (Bb). The fifth chord has a sharp sign over the first note (F#).

14. Match the Major scale degree name with the Roman numeral. (7 points)

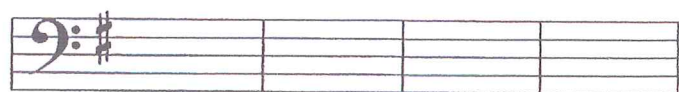
I	___	Leading tone
ii	___	Mediant
iii	___	Dominant
IV	___	Supertonic
V	___	Submediant
vi	___	Subdominant
vii ^o	___	Tonic

15. Write the Primary triads in this Major key. (3 points)



I IV V

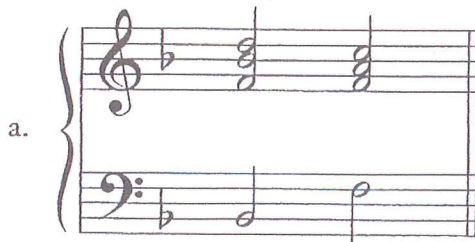
16. Write the secondary triads in this Major key. (4 points)



ii iii vi vii^o

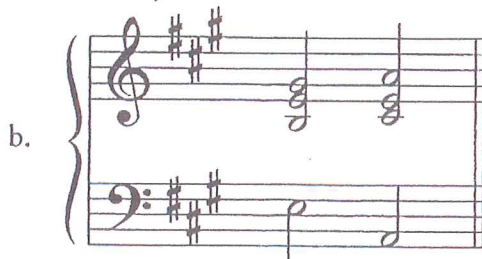
17. Match these cadences with their names. (3 points)

F Major



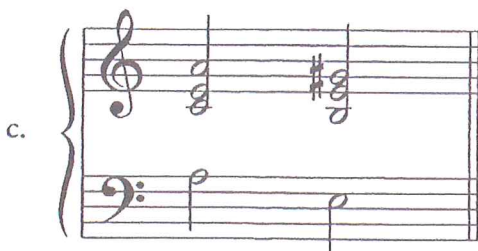
___ Half cadence

A Major



___ Plagal cadence

A minor



___ Authentic cadence

This musical example is from a piece by Mozart. Study the example, then answer the following questions. (5 points)

18. On which beat does this piece begin?
- beat 1
 beat 2
 beat 3
19. Which terms best describe the musical patterns in measures 1 through 4?
- sequence and transposition
 imitation and repetition
 repetition and sequence
20. Name the circled intervals (example: P5, M2, m3, etc)
- measure 2
 measure 6
 measure 7

21. Study this musical example. Check the term used to describe the bass pattern. (1 point)
- sequence
 cadence
 ostinato

This musical example is from a Sonata movement. It is in the key of E \flat Major. (8 points)

22. There are five boxed chords (a, b, c, d, e). Identify each according to this chart.

	Root (F, B \flat , C, etc)	Quality (Major, minor, Dominant 7)	Inversion (Root, 1st, 2nd)	Scale Degree (Tonic, Mediant, etc)
chord a	_____	_____	_____	_____
chord b	_____	_____	_____	_____
chord c	_____	_____	_____	_____
chord d	_____	_____	_____	_____

23. Are the chords in question 22 the primary chords in E \flat Major? yes
 no

24. Match the ornament names with the circled symbols in the following measures.

- | | | |
|-----------------|-------|-----------|
| a. trill | _____ | measure 1 |
| b. turn | _____ | measure 2 |
| c. appoggiatura | _____ | measure 4 |