

Student's Name \_\_\_\_\_

Teacher # \_\_\_\_\_ Branch \_\_\_\_\_

**KEYBOARD**

**LEVEL 6**

Perfect Score: 111

Number Incorrect: \_\_\_\_\_

Final Score: \_\_\_\_\_

Circle

Passing 78 Yes No

Convention Eligibility 89 Yes No

# Certificate of Merit™

Musical Knowledge Examination

2009

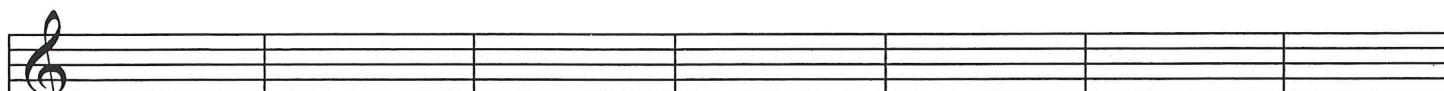


**KEYBOARD LEVEL SIX**

**Ear Training – Set B**

Copyright © 2009 Music Teachers' Association of California

1. Write the key signature for each of the following Major keys. (7 points)



G $\flat$  Major    C $\sharp$  Major    B $\flat$  Major    F Major    D $\flat$  Major    E Major    G Major

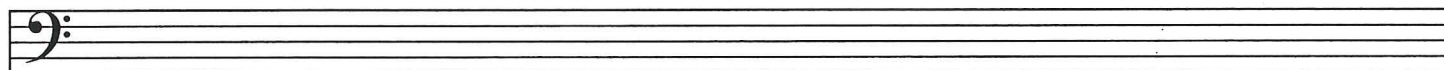
2. Name the minor key for each of the following key signatures. (6 points)



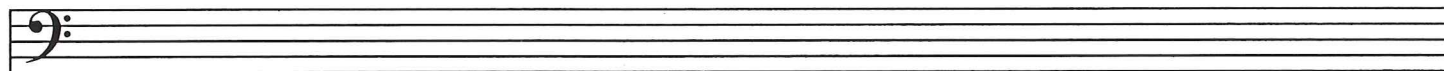
\_\_\_\_\_ minor    \_\_\_\_\_ minor    \_\_\_\_\_ minor    \_\_\_\_\_ minor    \_\_\_\_\_ minor    \_\_\_\_\_ minor

3. Write the following scales, one octave, ascending. Do not use a key signature. Put accidentals before the notes. (4 points)

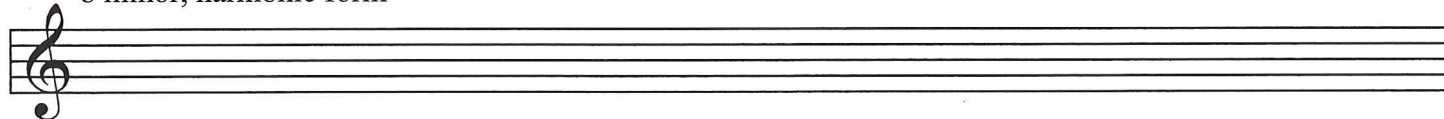
D $\flat$  Major



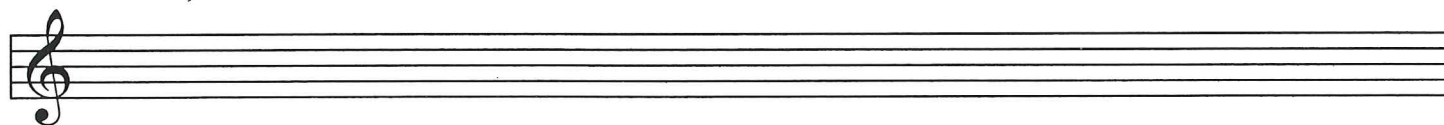
c minor, melodic form, ascending only



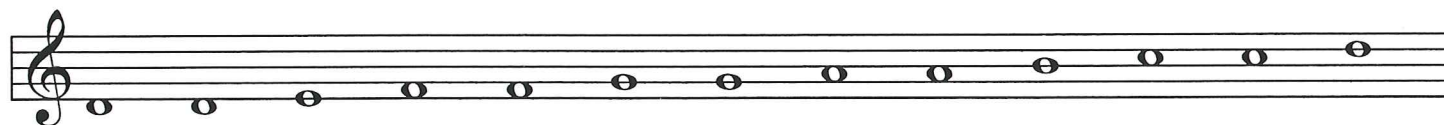
b minor, harmonic form



b $\flat$  minor, natural form



4. Add accidentals to complete the following chromatic scale. (1 point)





13. Write counts under the notes for each measure of the following example. (4 points)



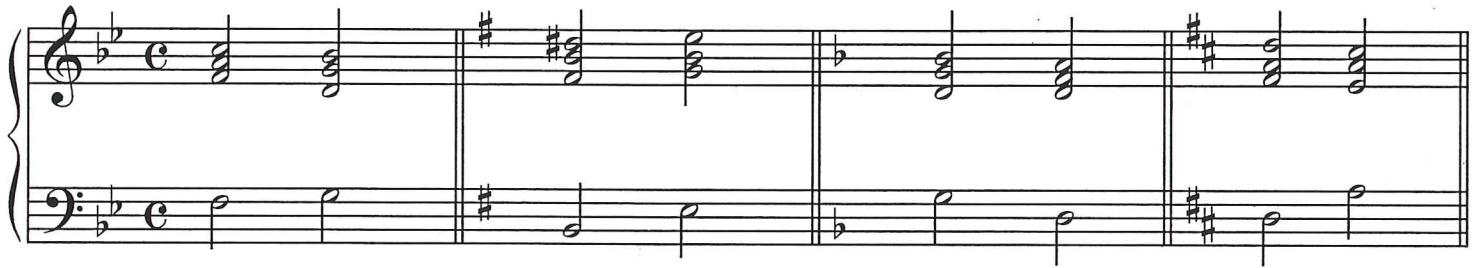
14. Determine the time signature for this example. (1 point)



15. Transpose the following example to the key of D Major. (1 point)



16. Name each of the following cadences. Whether to use the Major key or the minor key is indicated under each example. (4 points)



(Major key)

(minor key)

(minor key)

(Major key)

17. Check the correct answer for each question. (5 points)

a. Which composer is from the Classical Period?

- Handel
- Bartok
- Mozart

b. Which historical period is the most recent?

- Contemporary
- Baroque
- Classical

c. J.S. Bach lived during which historical period?

- Romantic
- Classical
- Baroque

d. Which is the earliest period?

- Baroque
- Contemporary
- Romantic

e. Which composer is from the Romantic Period?

- Kabalevsky
- Schumann
- Kuhlau

18. Check the correct term for each definition or musical example. (9 points)

a. playfully

- \_\_\_\_\_ *allegro*
- \_\_\_\_\_ *sostenuto*
- \_\_\_\_\_ *moderato*
- \_\_\_\_\_ *scherzando*

b. ✖

- \_\_\_\_\_ double sharp
- \_\_\_\_\_ *fermata*
- \_\_\_\_\_ double flat
- \_\_\_\_\_ natural

c. similarly, the same as

- \_\_\_\_\_ *scherzando*
- \_\_\_\_\_ syncopation
- \_\_\_\_\_ *simile*
- \_\_\_\_\_ *molto*

d. sadly, sorrowfully

- \_\_\_\_\_ *doloroso*
- \_\_\_\_\_ *tranquillo*
- \_\_\_\_\_ *presto*
- \_\_\_\_\_ *lento*

e. changing from one key  
(tonality) to another within  
a composition

- \_\_\_\_\_ *moderato*
- \_\_\_\_\_ *molto*
- \_\_\_\_\_ *marcato*
- \_\_\_\_\_ modulation

f. marked

- \_\_\_\_\_ *simile*
- \_\_\_\_\_ modulation
- \_\_\_\_\_ *marcato*
- \_\_\_\_\_ opus

g. sustained, giving note  
full value

- \_\_\_\_\_ *una corda*
- \_\_\_\_\_ *sostenuto*
- \_\_\_\_\_ *subito*
- \_\_\_\_\_ *andantino*

h. 

- \_\_\_\_\_ half notes
- \_\_\_\_\_ *forte piano*
- \_\_\_\_\_ *simile*
- \_\_\_\_\_ syncopation

i. E $\flat$  and D $\sharp$

- \_\_\_\_\_ relative keys
- \_\_\_\_\_ enharmonic notes
- \_\_\_\_\_ parallel keys
- \_\_\_\_\_ double flats

The Music Teachers' Association of California

**CERTIFICATE OF MERIT**

**Musical Knowledge Evaluation**

Answer questions 19-24 about the above music, from *The Sick Doll* by Tchaikovsky. (11 points)

**Keyboard: Level VIII**

19. Look at the key signature. What is the minor key? \_\_\_\_\_ minor
20. Determine the time signature. \_\_\_\_\_
21. What is the meaning of the symbol , used in the treble clef? Give the English meaning. \_\_\_\_\_
22. What dynamic change takes place in measure 5? Give the English meaning. \_\_\_\_\_
23. Name each circled chord with its root, quality, and figured bass  
 (such as C<sup>6</sup> Major 4)
 

STUDENT'S NAME _____	b. _____
TEACHER'S NUMBER _____	BRANCH _____
Score: _____	Check one: Passed _____ Needs More Study _____
Perfect Score = 117	Passing Score = 82
- a. \_\_\_\_\_
- b. \_\_\_\_\_
- c. \_\_\_\_\_
- d. \_\_\_\_\_
- e. \_\_\_\_\_
- f. \_\_\_\_\_

24. Check the name of the chord in measure 10.

- \_\_\_\_\_ Dominant
- \_\_\_\_\_ Dominant 7th
- \_\_\_\_\_ Subdominant



Answer questions 25-31 about the above music, from a Minuet by Beethoven. (11 points)

25. What is the Major key?

\_\_\_\_\_ Major

26. What is the meaning of *sf* in measure 1? Give the English meaning.

\_\_\_\_\_

27. What is the meaning of *fp* in measure 5. Give the English meaning.

\_\_\_\_\_

28. How many times will this section of music be played?

\_\_\_\_\_

29. How many beats will the tied A in measures 5-7 receive?

- \_\_\_\_\_ 7 beats  
 \_\_\_\_\_ 6 1/4 beats  
 \_\_\_\_\_ 6 1/2 beats

30. Name each circled chord with its Roman numeral and figured

bass, such as I <sup>6</sup> 4.

- a. \_\_\_\_\_  
 b. \_\_\_\_\_  
 c. \_\_\_\_\_  
 d. \_\_\_\_\_

31. Name each boxed interval.

1. \_\_\_\_\_  
 2. \_\_\_\_\_

# EAR TRAINING EVALUATION

The Music Teachers' Association of California  
Copyright © 1993



This is your Level 6 ear training evaluation. Listen to each question and its musical example.  
Mark your answer. Each example will be played two times. (15 points)

1. Recognition of Major or minor in a four-measure phrase.

Ex. 1	Major _____	minor _____	Perfect Score = 117
Ex. 2	Major _____	minor _____	Score: _____
			TEACHER'S NUMBER _____
			BRANCH _____

2. Recognition of Major or minor chords.

Ex. 1	Major _____	minor _____	
Ex. 2	Major _____	minor _____	

3. Recognition of Major and Perfect intervals.

Ex. 1	Major 3rd _____	Perfect 4th _____
Ex. 2	Major 2nd _____	Perfect 5th _____
Ex. 3	Major 6th _____	Major 7th _____

4. Recognition of Major, harmonic minor, or melodic minor scales.

Ex. 1	Major _____	harmonic minor _____	melodic minor _____
Ex. 2	Major _____	harmonic minor _____	melodic minor _____
Ex. 3	Major _____	harmonic minor _____	melodic minor _____

5. Recognition of meter in a four-measure phrase.

Ex. 1	3/4 time _____	4/4 time _____
Ex. 2	3/4 time _____	4/4 time _____

6. Recognition of tempo.

Scherzando \_\_\_\_\_ Doloroso \_\_\_\_\_

7. Recognition of a chord progression.

A. i iv V<sup>7</sup> i \_\_\_\_\_ B. I IV V<sup>7</sup> I \_\_\_\_\_

8. Recognition of a cadence.

Plagal \_\_\_\_\_ Deceptive \_\_\_\_\_

