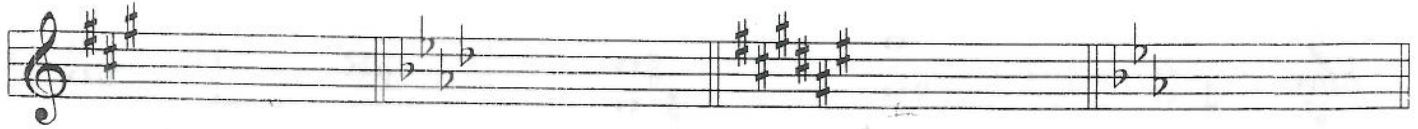
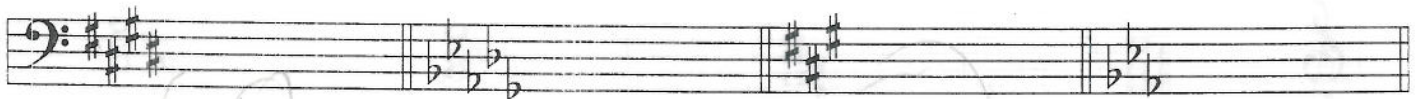


1. Name each **Major** key signature. (4 points)

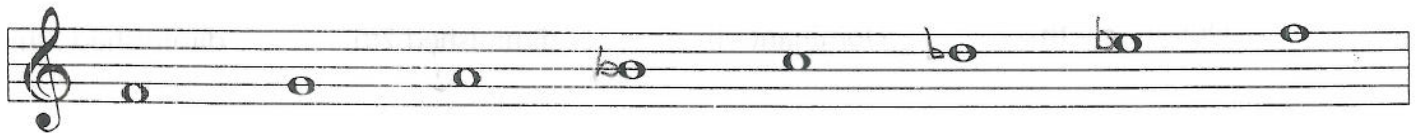


2. Name each **minor** key signature. (4 points)



3. Add the accidentals needed to form each scale. Do not use a key signature. (3 points)

F minor, Natural form



B minor, Harmonic form



G# minor, Melodic form



P-458

Mm-2367

M-m
m-M
P-P
A-d-A

4. Name each interval. (For example: P5, m6, etc.) (5 points)

A musical staff in treble clef with a key signature of one sharp (F#). It contains five pairs of notes: 1. F#4 and G4, 2. A4 and B4, 3. C5 and D5, 4. E5 and F#5, 5. G5 and A5.

5. Name the root of each triad. Tell if it is Major, minor, Augmented, or diminished. Tell if it is in-Root position (R), 1st inversion (1st), or 2nd inversion (2nd). (4 points)

A musical staff in treble clef with a key signature of one sharp (F#). It contains four triads: 1. F#4, A4, C5 (Root position), 2. G4, B4, D5 (1st inversion), 3. A4, C5, E5 (2nd inversion), 4. B4, D5, F#5 (2nd inversion).

6. Draw root position 7th chords on the following notes. (4 points)

A bass clef staff with four notes: Bb2, D3, F3, and Ab3.

Dominant 7th Dominant 7th diminished 7th diminished 7th

7. Write a Roman numeral under each chord in these chord progressions. The first one is given. (8 points)

Staff 1 (Treble clef, key signature of three sharps): C major triad (I), E major triad, G major triad, B major triad, D major triad.

Staff 2 (Bass clef, key signature of two flats): F major triad (i), A major triad, C major triad, E major triad, G major triad.

8. Write the counts under this rhythm. (2 points)



9. Define the following terms. (6 points)

- a. allargando _____
- b. piu mosso _____
- c. senza _____
- d. sempre _____
- e. rallentando _____ X
- f. pesante _____ X

10. Name the three main sections of a piece of music in Sonata Allegro form. (3 points)

- a. _____ b. _____ c. _____

11. Name two composers from each of the following periods of music history. (8 points)

- Baroque _____
- Classical _____
- Romantic _____
- Contemporary _____

12. Write the scale degree name for each Roman numeral. (7 points)

- I _____
- ii _____
- iii _____
- IV _____
- V _____
- vi _____
- vii° _____

13. What is the name for this accompaniment pattern? (1 point)



14. Match each ornament with its correct performance. (3 points)



The music above is from a Prelude by Bach. Answer these questions about the music.

15. No time signature is given. What should it be? (1 point) _____
16. In what minor key is this piece? (1 point) _____
17. What form of minor is used in measures 1-4? (1 point) _____
18. What compositional technique is found in measures 1-4?
Check (✓) one. (1 point) _____ repetition
_____ imitation
19. What compositional technique is found in measures 5-8?
Check (✓) one. (1 point) _____ sequence
_____ repetition
20. Name the intervals in the bass staff in measure 10. (3 points)
a. _____
b. _____
c. _____
21. Write the name of the ornament used in measure 1. (1 point) _____
22. Write the name of the ornament used in measure 10. (1 point) _____

The music above is from *Important Event* by Schumann. Answer these questions about the music.

23. In what Major key is this piece? (1 point) _____

24. On what beat does the music begin? (1 point) _____

25. Write the Roman numeral for each chord that has a letter above it. (7 points)

a. _____ b. _____ c. _____ d. _____

e. _____ f. _____ g. _____

26. Name the root and quality of the boxed chords in the following measures. (6 points)

Measure 1: B major

Measure 2: E major

Measure 3: _____

27. Name the cadence in measure 4. Check (✓) one. (1 point)

Half

Authentic

Plagal