

STUDENT'S NAME \_\_\_\_\_

TEACHER'S NUMBER \_\_\_\_\_ BRANCH \_\_\_\_\_

Perfect score = 91

Passing Score = 64

SCORE: \_\_\_\_\_ Check one: Passed \_\_\_\_\_ Needs More Study \_\_\_\_\_



**MASTER COPY**  
please do not write on

The Music Teachers' Association of California

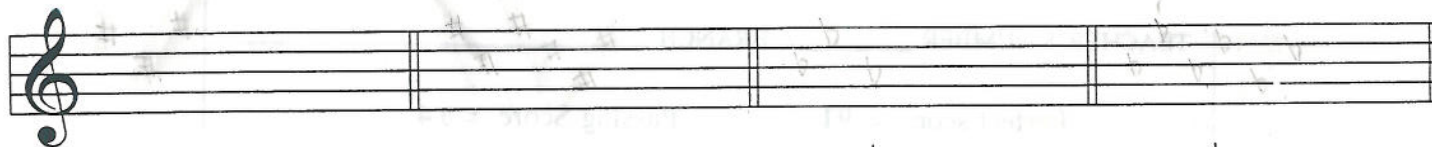
# CERTIFICATE OF MERIT

Musical Knowledge Evaluation

**KEYBOARD: LEVEL VIII**

**1998 Edition**

1. Write these Major key signatures. (4 points)



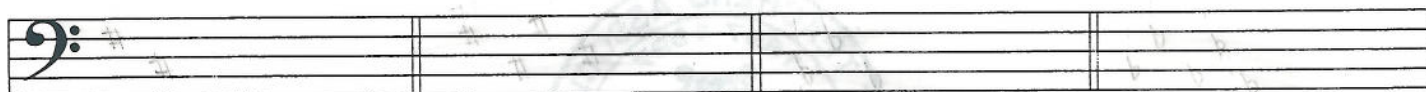
A Major

F# Major

E♭ Major

G♭ Major

2. Write these minor key signatures. (4 points)



B minor

C# minor

C minor

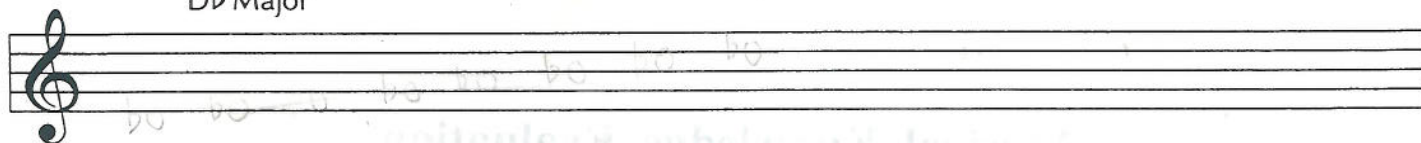
B♭ minor

3. Write these scales, one octave, ascending. Do not use a key signature. (4 points)

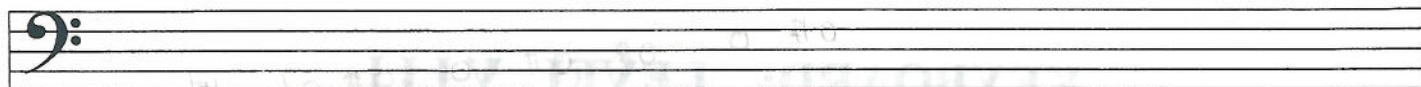
B Major



D♭ Major



F# minor, natural form



F minor, harmonic form



4. Write a note above each given note to form these harmonic intervals. (6 points)

M6                      A5                      m7                      P5                      d4                      m6

5. Write these triads. (8 points)

F Major  $\frac{6}{3}$                       D Augmented                      B $\flat$  minor  $\frac{6}{4}$                       A diminished

D $\flat$  Major  $\frac{6}{4}$                       G Augmented                      C $\sharp$  diminished  $\frac{6}{3}$                       F $\sharp$  minor  $\frac{6}{3}$

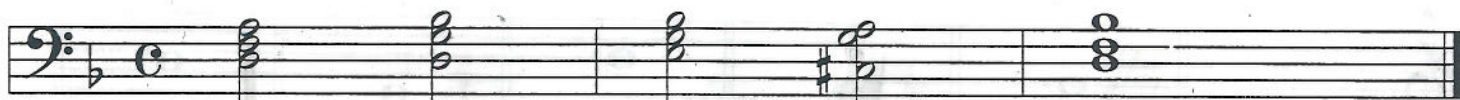
6. Write Dominant 7th chords in the following keys. (4 points)

A Major:  $V\frac{6}{5}$                       G minor: V7                      B Major:  $V\frac{4}{2}$                       F minor:  $V\frac{6}{5}$

7. Write diminished 7th chords on the following roots. (4 points)

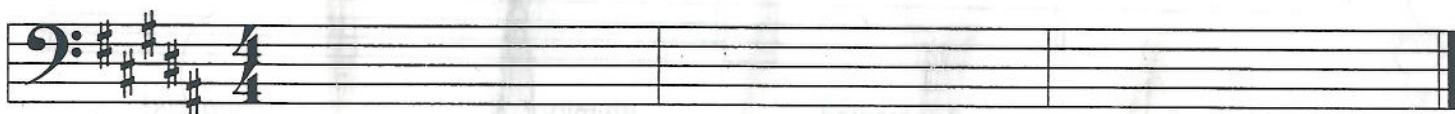
D diminished 7                      A diminished 7                      E diminished  $\frac{6}{5}$                       C $\sharp$  diminished  $\frac{4}{3}$

8. Label each chord in this chord progression with a Roman numeral and figured bass. (5 points)



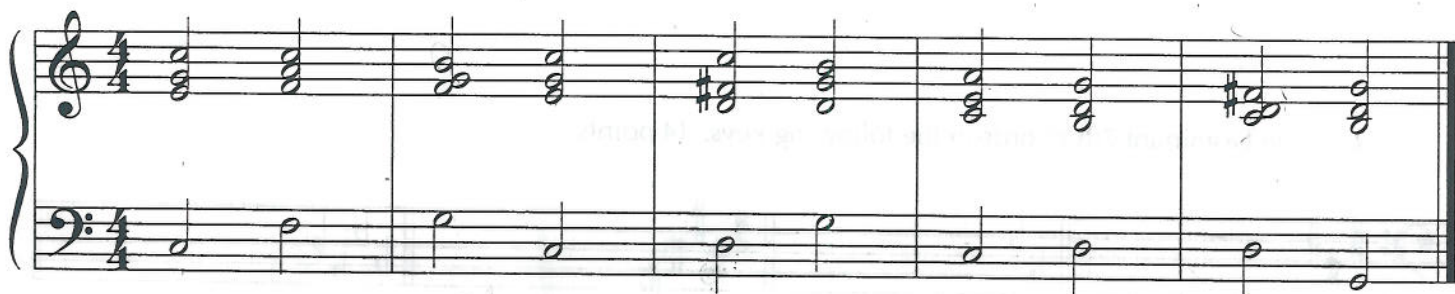
D minor: \_\_\_\_\_

9. Write the following chord progression. (4 points)



B Major:            I            IV<sup>6</sup>/<sub>4</sub>            ii            V<sup>6</sup>/<sub>5</sub>            I

10. Study this chord progression and answer the questions below. (10 points)



I            \_\_\_\_\_            \_\_\_\_\_            V7 of V            \_\_\_\_\_  
 New key: I            \_\_\_\_\_            \_\_\_\_\_

- Label each underlined chord with a Roman numeral and figured bass.
- In what key does this chord progression begin? \_\_\_\_\_
- What is the new key? \_\_\_\_\_
- What is the term for this key change? Check (✓) one. \_\_\_\_\_ modulation  
 \_\_\_\_\_ transposition

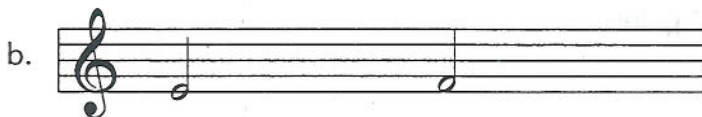
11. Write the counts under this rhythm. (3 points)



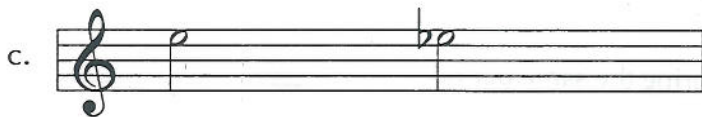
12. Match each music example with its term. (Put the letter of the example by the term)  
(5 points)



\_\_\_ diatonic half step



\_\_\_ whole tone scale



\_\_\_ augmentation

\_\_\_ chromatic half step

\_\_\_ diminution



The music above is from an invention by J. S. Bach.  
 Answer these questions about the music. (7 points)

13. What is the term for the time signature?

\_\_\_\_\_

14. What period of music history does J. S. Bach represent?

\_\_\_\_\_

15. Name another composer who lived during the same period.

\_\_\_\_\_

16. What is the texture of this music? Check (✓) one.

homophonic

polyphonic

17. What term is used to describe the rhythm pattern of the bass clef notes in measure one, beats 1 and 2?

augmentation

syncopation

18. What compositional technique is found in measures 1 and 2?

imitation

sequence

19. What compositional technique is found in measures 3 and 4?

imitation

sequence

**Largo**

The music above is from a Prelude by Chopin.  
 Answer these questions about the music. (10 points)

- 20. What is the meaning of Largo? \_\_\_\_\_
- 21. What is the term for the time signature? \_\_\_\_\_
- 22. What is the texture of this music?  
 \_\_\_\_\_ homophonic  
 \_\_\_\_\_ polyphonic
- 23. What period of music history does Chopin represent? \_\_\_\_\_
- 24. Name another composer who lived during the same period. \_\_\_\_\_
- 25. In which treble clef measure is there a chromatic half step? \_\_\_\_\_
- 26. Name the root and quality of the circled chords.  
 The first one is done for you.

- a. E minor
- b. \_\_\_\_\_
- c. \_\_\_\_\_
- d. \_\_\_\_\_
- e. \_\_\_\_\_

## Ear Training Evaluation

This is your Level VIII ear training evaluation. Listen to each question and its musical example. Mark your answer. Each example will be played two times.

**1. Recognition of Major and minor in a phrase.**

Example 1:  Major  minor

**2. Recognition of musical texture.**

Polyphonic  Homophonic

**3. Recognition of triads played in a series.**

Ex. 1:  Major  minor  diminished  Augmented

Ex. 2:  Major  minor  diminished  Augmented

Ex. 3:  Major  minor  diminished  Augmented

Ex. 4:  Major  minor  diminished  Augmented

**4. Recognition of intervals.**

Example 1:  P4  P5

Example 2:  M7  A4

Example 3:  m6  m7

**5. Recognition of minor scales: natural, harmonic and melodic**

Example 1:  natural  harmonic  melodic


Example 2:  natural  harmonic  melodic


Example 3:  natural  harmonic  melodic

**6. Recognition of Rhythm in a Four-measure Phrase.**

Ex. 1:  $\frac{4}{4}$  { No. 1   ||

No. 2   ||

Ex. 2:  $\frac{6}{8}$  { No. 1   ||

No. 2   ||

**7. Recognition of a secondary dominant in a phrase.**

Meas. 1  Meas. 2  Meas. 3  Meas. 4

**8. Recognition of a cadence.**

Authentic  Deceptive