

**ANSWER KEY**

Please read *Guidelines for Grading Theory Tests*

**LEVEL 3**  
**Total Points = 90**

**CERTIFICATE OF MERIT**  
**2011**

**Points**

**Points**

**1. Major Key Signatures** 6

A Major, B Major, B $\flat$  Major, E $\flat$  Major,  
F Major, G Major

**2. Minor Key Signatures** 3

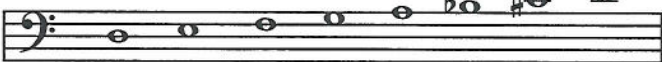
e minor, a minor, d minor

**3. Scales** 5

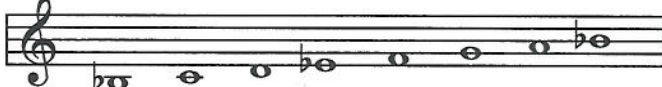
F Major



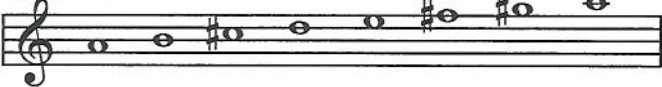
d minor, harmonic form



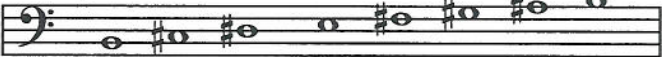
B $\flat$  Major



A Major



B Major



**4. Intervals** (Level 3 only requires M and P, so do not deduct points for unclear capital M) 7

(P4), P5, M3, M7, M6, M2, P8, P4

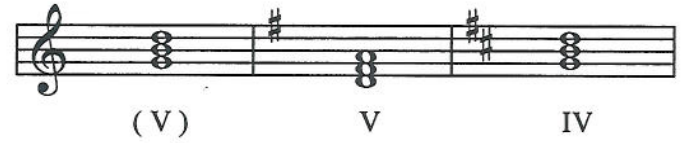
**5. Triads** 5

(C Major)      a minor      D Major  
E $\flat$  Major      g minor      B $\flat$  Major

**6. Inversions of Triads** (Accept figured bass) 5

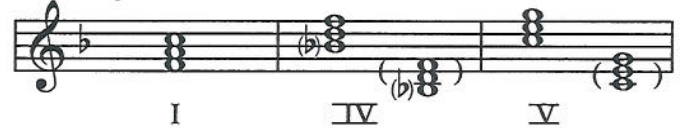
(1st), 2nd, R, 2nd, 1st, R

**7. Roman Numerals** 5

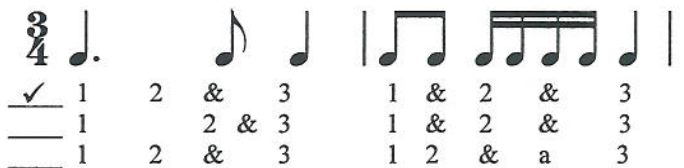
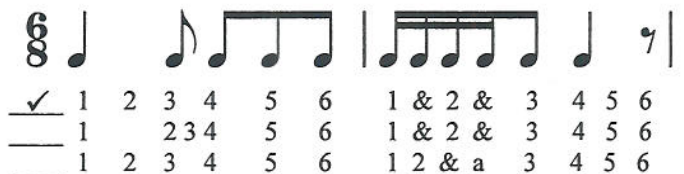


**8. Primary Triads** (Do not deduct points if student puts all triads in one measure) 3

F Major



**9. Rhythm - Counts** 3



**10. Rhythm - Time Signature** 1

$\frac{4}{4}$  or C

**11. Rhythm - Beats** 4

a. 1 beat    b. 1 beat    c. 2 beats    d. 2 beats

## Points

## Points

## 12. Cadences 3

- a. Half
- b. Plagal
- c. Authentic

## 13. Terms 10

- a. *tre corde*
- b. *dolce*
- c. *accel.*
- d. *adagio*
- e. *poco*
- f. *vivace*
- g. motive
- h. *spiritoso*
- i. legato pedal
- j. *molto*

## Musical Example by Beethoven 10

- 14. soft
- 15. 3
- 16. quarter note (♩)
- 17. moderate tempo (medium, moderate)
- 18. I
- 19. a. G Major
- b. C Major
- 20. 1. Root Position
- 2. 1st Inversion
- 21. accidentals

## Musical Example by Clarke 10

- 22. D Major
- 4
- 23. 4
- 24. a. *tenuto*: hold for full value
- b. *staccato*: crisp, detached
- c. *slur*: connect the notes
- 25. 8 (measure 8)
- 26. a. P4
- b. M3
- c. M2
- d. P4

## Ear Training (Set C) 10

- 1. minor
- 2. Major
- 3. Staccato
- 4. Ex. 1: Major
- Ex. 2: minor
- 5. Ex. 1: Major 2nd
- Ex. 2: Major 7th
- Ex. 3: Perfect 5h
- 2
- 6. 4 time
- 7. Spiritoso