

ANSWER KEY

Please read *Guidelines for Grading Theory Tests*

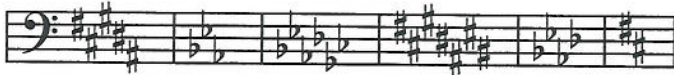
LEVEL 7
Total Points = 120

CERTIFICATE OF MERIT
2011

Points

Points

1. Major Key Signatures 6



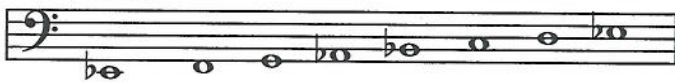
BM EbM GbM C#M AbM DM

2. Minor Key Signatures 6

c# minor, b-flat minor, c minor, d minor, b minor, e-flat minor

3. Scales - Writing 3

E-flat Major



g# minor, natural form



e minor, harmonic form



4. Scales - Adding Accidentals 3

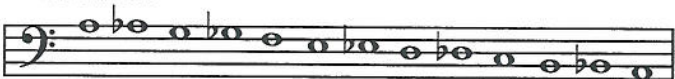
f minor, melodic form



Whole Tone



Chromatic



5. Circle of Fifths 3

- (G Major)
- E-flat Major
- f# minor
- G-flat Major (accept F# Major)

6. Intervals - Writing 6



A7 m6 d4 P8 A5 d3

7. Triads - Naming* (Do not deduct points if student adds incorrect figured bass.) 6

A Major, e minor, Gb Augmented, c diminished, f# minor, Db Major

8. Figured Bass 6

6 6 5 5 6 6
3 4 3 3 3 4

9. Seventh Chords - Adding Accidentals 5



g dim 5 D Dom 5 Bb Dom 7 a dim 2 Eb Dom 3

10. Dominant Seventh Chords - Keys 5

A-flat Major, C Major, B Major, D Major, F Major

11. Scale Degree Names 5

(Tonic), Dominant, Supertonic, Submediant, Subdominant, Leading tone

12. Cadences 4

Authentic, Deceptive, Plagal, Half

13. Transposition (Also accept one octave higher) 1



14. Modes 2

- Dorian
- Mixolydian

15. Composers 4

- Classical
- Romantic
- Baroque
- Contemporary

* When students are asked to write out "Major" or "minor," do not deduct points if they write "M" or "m" legibly, or use abbreviations "Maj.," "maj.," "Min." or "min."

Points

Points

16. Enharmonics 2



17. Rhythm - Add one note 4



18. Terms - Multiple Choice 8


- always
- with more motion, quicker
- gradually slower, broadening
- slow tempo
- each voice exactly imitates the melody of the first voice
- with fire
- immediately slower
- humorously, jokingly

Musical Example by Schumann 14

19. F Major

4

20. 4

21. quarter note ()

22. use damper pedal (accept "pedal")

23. C# (c sharp, sharp, #)

24. 1 1/2 beats

25. gradually slower

26. Romantic

27. A Dominant ⁶5

28. (Do not delete points if student adds incorrect figured bass)

- B^b Major
- F Major
- d minor
- f minor
- C Major

Musical Example by Kuhlau 14

- cheerfully, merrily, fast, quick
- a sudden, sharp accent
 - loud, immediately followed by soft
 - sweetly
- (Lines are required above and below Roman numerals for Major chords)
 - I (or I ⁵3)
 - I ⁶4
 - vi (or vi ⁵3)
 - ii⁶ (or ii ⁶3)
 - I ⁶4
- m2
 - P8
 - M6
 - d7
 - d5

Ear Training (Set C) 13

- Major
- Yes
- Ex. 1: Augmented
Ex. 2: minor
- Ex. 1: minor 6th
Ex. 2: minor 3rd
- Ex. 1: natural minor
Ex. 2: melodic minor
Ex. 3: harmonic minor
- A ³
- ⁴ time
- Doloroso
- Plagal